

***Tesio*Select**

Documentation

Introduction

This document describes ***Tesio*Select** created by Syntax Software. The system is designed to allow stud farms access to the ***Tesio*Power** online database so that prospective clients can match their mares to the farm's stallions.

Background

Syntax Software and Vetesio International jointly develop and market the world-leading pedigree analysis system, ***Tesio*Power**. In 2003, Syntax Software made the database and a simple pedigree system available to the public through the world wide web.

Now, this same system can be customized for individual farms. Prospective clients anywhere in the world can enter their mare's name and then select from a list of the farm's stallions. The system will generate a pedigree of the potential mating and display it on-screen. ***Tesio*Select** can advise the stud via email when a pedigree has been viewed and a contact system lets the remote user request more information.

How You Can Participate?

Any farm can be part of the ***Tesio*Select** program*. The cost is currently \$20 per week. Subscription is payable 12 months in advance.

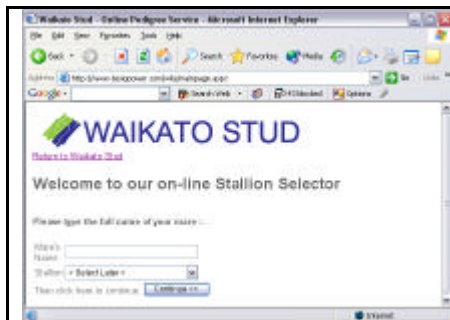
You will need to give us details of how you'd like the page to look, your list of stallions, your home and stallion web pages, plus a contact email address. Your technical advisor then inserts a link or links on your website through to ***Tesio*Select**.

Although the standard ***Tesio*Select** package is highly customizable, extra changes can be made. The cost for these is charged on a per hour basis and quotes are required.

For more information, please contact Paul Vettise on paul@tesiopower.com or by phone on +64 27 274-8558 (replace the '+' with your international dialing code, NZ residents call (027 274-8558)).

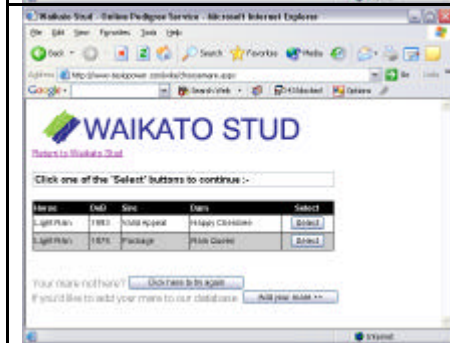
*Subject to our acceptance and a paid-up subscription.

How it Works

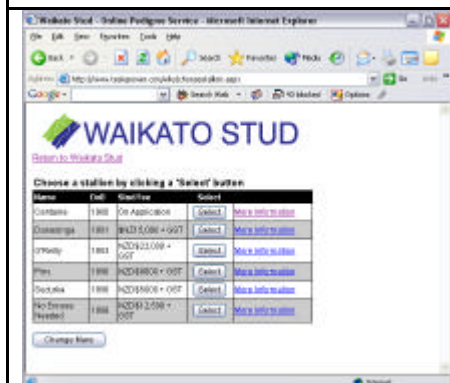


After clicking a link at your website, the user is taken to the Main Page of your personalized **TesioSelect** site.

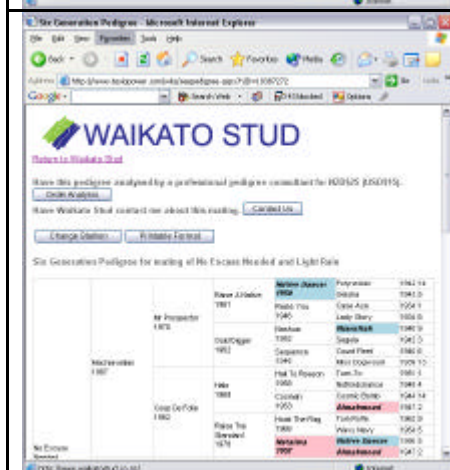
To get started, the user must first tell the system the name of the mare they wish to mate to.



If the mare's name entered is not on file, but is similar to other names or if the name is present in the database more than once, **TesioSelect** will offer a list of mares to choose from. The user is also offered the option to add a new mare to the database or to return and enter another mare's name. If the user enters a name that is unlike any other on file, they will only get the option to add or try again.



After a mare has been selected, the user is offered a list of stallions standing at the farm. The list also includes stud fee and terms, plus a link back to the stallion's own web page.



When the user selects a stallion from the list, a six generation pedigree is created and displayed to the user showing male and female duplications, plus an inbreeding summary. Simultaneously, **TesioSelect** sends a message to a nominated email address at the farm showing which mare has been offered to which stallion. At this stage, the online user's identity is still unknown, but the pedigree screen offers an option for the user to request more details or to have the prospective pedigree analyzed. The user can also print the pedigree.

Customization

Each copy of **TesioSelect** is customized to a particular farm. The most obvious customization is the list of stallions standing at the farm. However, many other aspects of the pages can be customized too. Colours, fonts, headers and features can all be customized to suit individual farm's needs.

Technical Details

The **TesioSelect** system is based on the popular **TesioPower** software and database. The database contains an ever-growing list of horses, currently around 400,000 strong, from around the world. The online database is hosted in a Microsoft SQL Server database. The **TesioPower** software has been modified to suit the web environment and been re-written in the Microsoft ASP.NET system.

The site is made up from the following files. Files in bold are unique to the farm, the others are common to all farms.

| | | |
|----|----------------------------|--|
| 1 | IncludedHeader.ascx | This file includes all the details that appear at the top of each page. It usually contains the farm's logo and any special information such as a link back to the farm's website. It also contains the colour and style information for all the site's pages. A sample file is shown later in this guide. |
| 2 | MainPage.aspx | This is the first page that users will see. It collects the mare's name and optionally, the stallion. |
| 3 | choosemare.aspx | This screen is only displayed if there is any confusion over the mare's name. It allows the user to select which mare to use when there is more than one possible match to the name entered. |
| 4 | addhorsesdb.aspx | This screen lets the user add a new horse to the database. |
| 5 | choosesiredam.aspx | When adding a new mare, this screen accepts the user's choice of sire and dam. |
| 6 | confirmaddtodb.aspx | This screen asks the user to confirm their input and add a new mare to the database. |
| 7 | sorrycantadd.aspx | If for some reason, the mare cannot be added, this screen is shown. |
| 8 | chosestallion.aspx | After a mare is selected or added, the user can then choose a stallion from the farm's pre-set list. |
| 9 | Stallions.xml | This is an XML file containing the list of stallions available at this farm. A sample listing is shown later in this guide. |
| 10 | seepedigree.aspx | This screen displays a six generation pedigree for a mating of the stallion and mare selected. It shows duplications and linebreeding information. The screen can also have contact information displayed. |
| 11 | printpedigree.aspx | This is a printable version of the pedigree. It has no information besides the pedigree and is formatted to |

| | | |
|----|-----------------------------|--|
| | | fit an A4 or US Letter page. |
| 12 | PedigreeContact.ascx | This file contains the contact details that appear at the top of pedigree pages. |
| 13 | contact.aspx | This is the page displayed when a user wishes to contact the farm regarding a mating. |
| 14 | contact.xml | This is an XML file that contains the email address that contact information is sent to. A sample file is displayed later in this guide. |

What You Need To Do

After the agreement to provide this service has been accepted by both parties, there are a number of steps to take.

1. Advise the list of stallions, fees and web pages.
2. Decide on the style required and any customization, if required.
3. Advise us of the contact email addresses to use.
4. Add links to your own web pages that link to **TesioSelect**.

In more detail:

1. Advise the list of stallions, fees and web pages.

In order that the user be presented with a list of stallions at your farm, we need you to advise us of the details that the user will see.

We need the stallions:-

Name
Year of Birth
Stud Fee and conditions (Live Foal, Free Return, etc)

Plus:

Link to stallion's web page.
Order in which the stallions should be displayed.

These details are coded into an XML file, **stallions.xml**, stored on our server. The file looks like this extract :-

```
<?xml version="1.0" encoding="UTF-8"?>
<Stallions>
  <Record>
    <FileID>1</FileID>
    <ID>10053979</ID>
    <Name>Centaine</Name>
    <DoB>1980</DoB>
    <Fee>On Application</Fee>
    <Comments></Comments>
    <Link>http://www.waikatostud.co.nz/centaine.htm</Link>
  </Record>
</Record>
```

```

        <FileID>2</FileID>
        <ID>10075745</ID>
        <Name>Danasinga</Name>
        <DoB>1991</DoB>
        <Fee>$NZ15,000 + GST</Fee>
        <Comments></Comments>
        <Link>http://www.waikatostud.co.nz/danasinga.htm</Link>
    </Record>
</Stallions>

```

We can maintain this file for you or allow you to maintain it yourself.

2. Decide on the style required and any customization, if required.

Now the format of the pages needs to be specified. The **TesioSelect** system allows each farm's site to be customized with different headers, colours, fonts and logo. This is done by a file called **IncludedHeader.ascx**. A sample file is below

```

<a href="http://www.waikatostud.co.nz">
</a>
<br>
<a href="http://www.waikatostud.co.nz">Return to Waikato Stud</a>

<style type="text/css">

BODY      { font-family:Arial; color:#666666; font-size:10pt; background-color:#FFFFFF; }
TD        { font-family:Arial; }
INPUT     { font-family:Arial; font-size:9pt; }
SELECT    { font-family:Arial; font-size:9pt; }
TEXTAREA  { font-family:Arial; font-size:9pt; }

        .Grid_Item
        {
            color:#000000;
            background-color:#ffffff;
        }

        .Grid_AlternatingItem
        {
            color:#000000;
            background-color:#cccccc;
        }

</style>

<title>Waikato Stud - Online Pedigree Service</title>

```

The details this file is setting for each page is the stud's logo at the top of each page, the colours used for fonts, backgrounds, links and lists, plus the page title. This file can also contain most HTML commands and so can be highly customized to your requirements. Bear in mind though that this header will be display for all pages.

Generally speaking, we will maintain this page for you.

3. Advise us of the contact email addresses to use.

There are two sections of **TesioSelect** that can contact you via email. The first is when a user makes a stallion selection. The **TesioSelect** system can send you an email to let you know that a user has selected a stallion. The system does not know the identity of the user, but it dos know the name of the mare being mated and the stallion chosen, so these details are sent you.

An email address is also used on the online contact form. The online contact form provides a place for a user to send you a message regarding a potential mating. The email address for the contact form can be the same as the one used for the stallion selection alert, if required.

4. Add links to your own web pages that link to **TesioSelect**.

In order for visitors to your website to be able to check their mares with your stallions, you must have a link on your webpage through to **TesioSelect**.

Links can take either of two forms.

| | |
|--|--|
|  <pre data-bbox="188 801 898 994"><form name="form1" method="post" action="http://tesiopower.com/wks/mainpage.aspx"> <input type="submit" name="Submit" value="Online Stallion Selector"> </form></pre> | <p>A button type link.</p> <p>This button is created using code as shown.</p> |
| <p>Online Stallion Selector.</p> <pre data-bbox="188 1137 956 1218">Online Stallion Selector.</pre> | <p>A standard hyperlink, which is created using code as shown.</p> |

If you prefer, you may use other link types to open the **TesioSelect** Main Page in a new and/or customized browser window.

Support.

For sales/administration/database support, please direct enquiries to Paul Vettise at paul@tesiopower.com

For technical, configuration and customization enquiries, please email Simon Morris at simon@tesiopower.com.